

Deff Sound

USB Audio DAC & Headphone Amplifier

DDA-DAC1U

Owner's Manual

© 2014 Deff Corporation. All rights reserved.

Product Feature

■ DSD playback support USB DAC & Headphone amplifier
High performance USB Audio LSI enable 24bit/96KHz PCM playback, more over 2.8GHz (2.8224MHz) Format DSD Playback

■ SNR115dB Line out

SNR 115dB (A-weight Filter), Hi SNR, it is just same level as Hi-Fi Audio system

■ High performance OS-CON

Low-ESR, Conductive polymer aluminum solid electrolytic condenser OS-CON brings extreme low distortion.

■ Digital Out, Digital In

24bit/96KHz PCM supported

Unsupported : hardware sound monitoring

Support : recording to PC by PC software

■ USB bus power / non driver

■ 2 type Headphone supported

Standard and ϕ 3.5mm stereo mini jack

Unsupported : Simultaneous monitoring

■ Mobile monitor (front line in)

Support music player or mobile phone that have 3.5mm earphone out put. Only monitoring.

Remark: Power supply (5V, 500mA) is needed when use this function.

Specification and contents

- USB Interface : USB2.0 Full Speed
Asynchronous mode and isochronous transportation
 - Maximum sampling frequency : 24bit/96KHz
 - SNR : 115dB (A-weight Filter, RCA output)
 - Headphone output : 50 mW (32Ω)
 - Support OS : Windows XP/ Vista / Windows 7 / 8 /8.1
Mac OS X
 - Dimension : W 110.0 x D 107.9 x H 35.6 mm
-
- DDA-DAC1U USB Audio DAC & Headphone Amplifier
 - User Manual
 - USB Cable
 - RCA Cable
 - Optical Cable

License and Trademark Information

- Formal name of Windows is Microsoft Windows Operating System.
- Microsoft, Windows, Windows Media and Windows Vista are trademarks of Microsoft Corporation , registered in the U.S. and other countries.
- Apple, the Apple logo, Mac OS are trademarks of Apple Inc., registered in the U.S. and other countries.

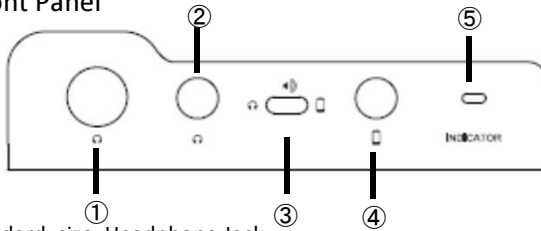
Connections

■ Connecting the each devices



Connector and Switch

■ Front Panel



① Standard size Headphone Jack

② Stereo mini Headphone Jack

③ Selector

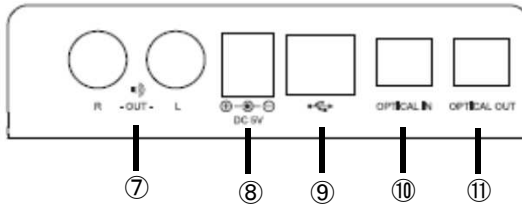
Headphone out / Line out / Front In

④ Mobile monitor

⑤ Power indicator

Turn on when USB connect to PC

■ Rear Panel



⑦ Line out

⑧ DC-In

If need more electricity, use USB-DC cable and connect

⑨ USB

⑩ Optical In

⑪ Optical Out

Volume

■ Top Panel



⑫

⑫ Volume

Remark: Line out and Optical Out are fixed , not variable.

Selector and Signal Flow

Selector Position	Input		Output	Signal Flow
Headphone	USB	->	Optical Out	○
	USB	->	Line out	x
	USB	->	Headphone	○
	Optical In	->	USB	○
	Optical In	->	Optical Out	x
	Optical In	->	Line out	x
	Optical In	->	Headphone	x
	Mobile monitor	->	USB	x
	Mobile monitor	->	Optical Out	x
	Mobile monitor	->	Line out	x
Line out	USB	->	Optical Out	○
	USB	->	Line out	○
	USB	->	Headphone	x
	Optical In	->	USB	○
	Optical In	->	Optical Out	x
	Optical In	->	Line out	x
	Optical In	->	Headphone	x
	Mobile monitor	->	USB	x
	Mobile monitor	->	Optical Out	x
	Mobile monitor	->	Line out	x
Mobile monitor	USB	->	Optical Out	○
	USB	->	Line out	x
	USB	->	Headphone	x
	Optical In	->	USB	○
	Optical In	->	Optical Out	x
	Optical In	->	Line out	x
	Optical In	->	Headphone	x
	Mobile monitor	->	USB	x
	Mobile monitor	->	Optical Out	x
	Mobile monitor	->	Line out	x
Mobile monitor	->	Headphone	○	

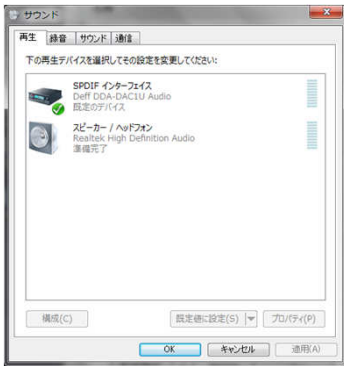
* ○ : OK x : NG

Setting

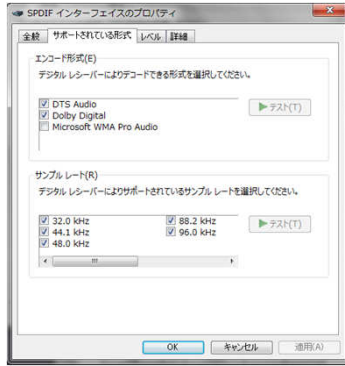
■ Windows

Image capture sample: Windows 7 (Japanese)

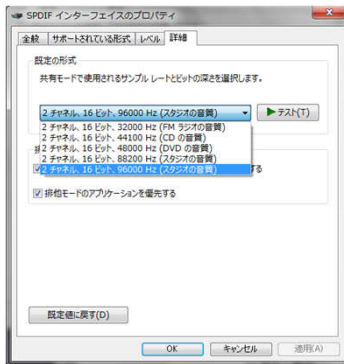
Playback device selection



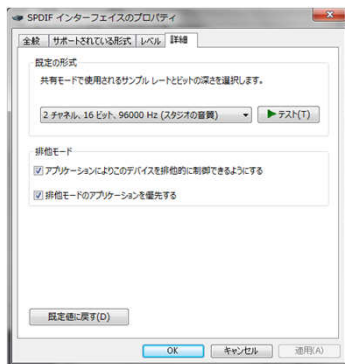
Support format check



Samplingrate select



Exclusive (WASAPI) setting

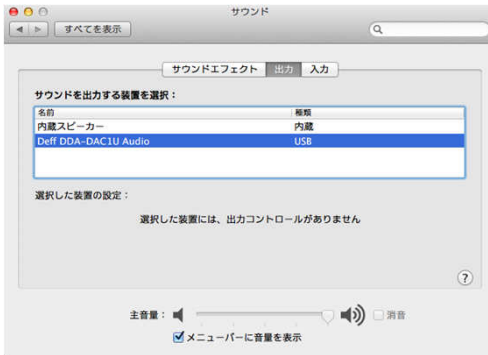


Setting

■ MacOS X

Image capture sample: MacOS X Mountain Lion (Japanese)

Sound setting



Audio MIDI Setting

